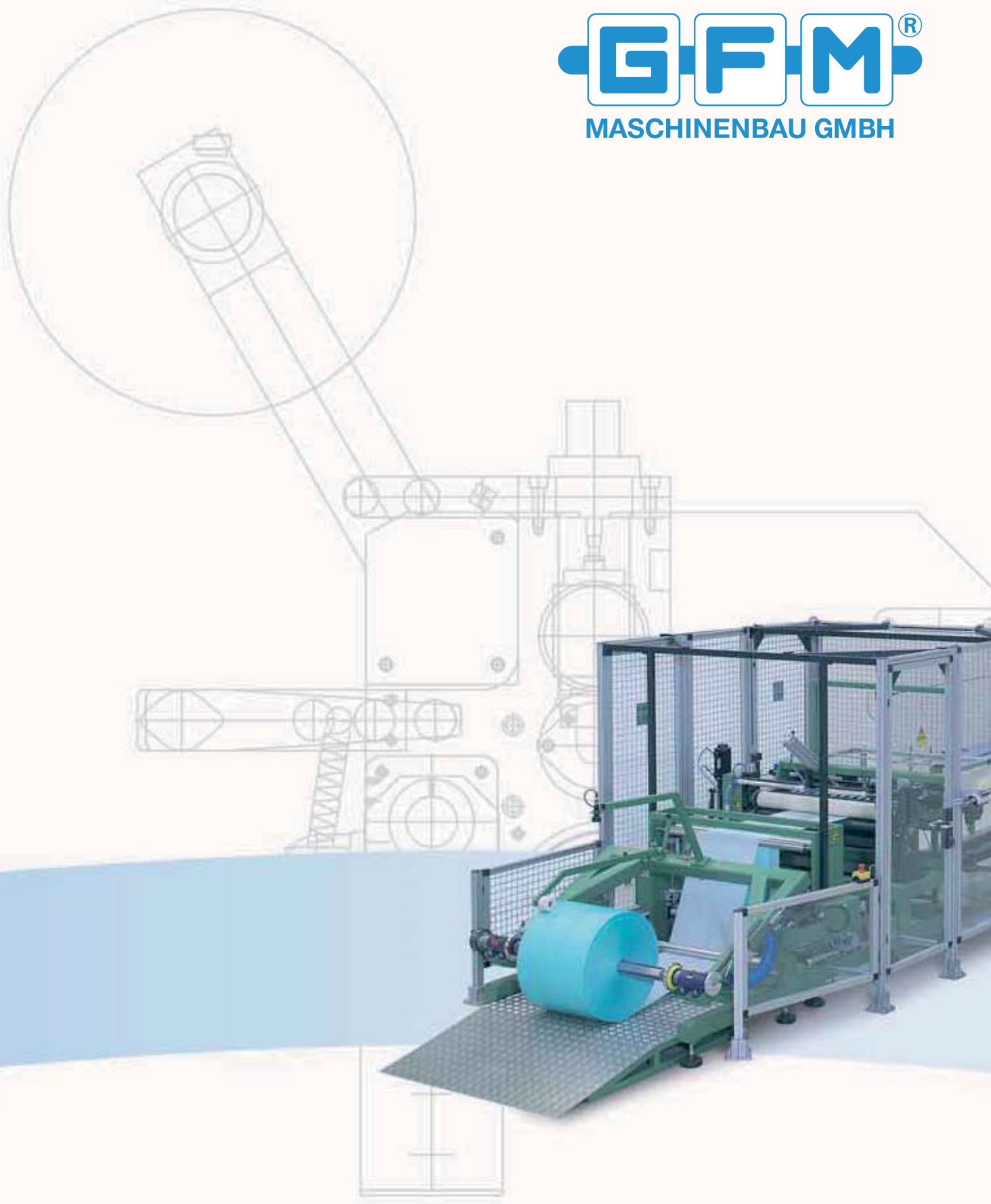




MASCHINENBAU GMBH



**PIONEERING MANUFACTURING AND PACKAGING SOLUTIONS
FOR MEDICAL, HYGIENE, CATERING INDUSTRY AND MORE...**

■ OUR PHILOSOPHY

GFM provides the Solution



Dipl.-Ökonom Martin Gawarecki
Management

Dipl.-Ing. Herbert Gawarecki
Managing Director

One fact is indisputable: Because of the enormous competitive pressure in today's markets, western industrialized countries can only manufacture cost-effective and market-oriented disposable products using state of the art manufacturing and packaging machines.

GFM Maschinenbau GmbH designs and supplies this equipment, tailored precisely to the individual needs and demands of the customer. Innovative, high performance and reliable machines alone, allow to manufacture products with highest efficiency for market-oriented conditions. Depending on your target, GFM makes it easier for you to maintain your market share or expand it.

The building blocks of GFM dependability and the essential keys to its success are experience, customer orientation, precision and the permanent quest for optimization potential.

■ MILESTONES

Perseverance only creates Continuity

1972

Herbert Gawarecki sets up his engineering office in Castrop-Rauxel specializing in the design of manufacturing machines for hygienic products.

1975

The company acquires new facilities, relocates its headquarters to Haltern and starts the design for coffee filter manufacturing machines.

1980

Expansion of the design office by a company owned workshop for machine construction. Development, design and construction of manufacturing machines for hygienic products, coffee filters and surgical drapes.

1986

The company moves to Lohausstrasse facilities, having 3500 sq. meters of floor space, allowing to develop, design and build manufacturing machines for disposable products serving medical, hygienic and restaurant purposes.

1988

Given the expansion of international business, GFM Maschinenbau GmbH is founded. Supply of the first machine to the USA.

ENGINEERING



What's built today
should not be outdated tomorrow



That is why in-depth dialogues with the customer first define the demand profile of the desired machine. A key aspect of these discussions is a comprehensive analysis of all requirements, including the latest developments and innovations.

Afterwards, the fine tuned demand profile gets translated by the experienced staff of our design office.

Close contact with the customer is maintained during the entire design and development process. Design reviews make sure that the machine is fully in line with customer demands and needs.

The design having been accepted by the client, the plant undergoes construction in our manufacturing and fitting site. Start-up takes place using the customer's original material with which intensive tests are carried out.



1992

Establishment of the first CAD workstations.

1999

Relocation of the design office and administration to Oer-Erkenschwick. Expansion of the design office capacity.

2002

Delivery of the first speciality drape machine.

2008

Acquirement of new 3D-CAD-systems.

2010

Relocation of company seat to Oer-Erkenschwick.

■ MEDICAL SOLUTIONS

Manufacturing and Packaging Solutions for Disposable Medical Products

Machines for People in the Center of Health Care

Folding machines for large surgical drapes

Most complex, two-dimensional surgical drapes such as angiography drapes, extremity drapes or split sheets are fully automatically manufactured on these innovative machines along with all the applications.

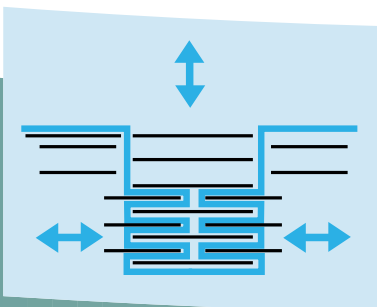
Folding machines for small and medium sized surgical drapes

A wide range of folding machines is available. Optional applications, such as reinforcements, adhesive tapes, adhesive sheets, cut-outs or printing can be integrated into the fully-automatic process.

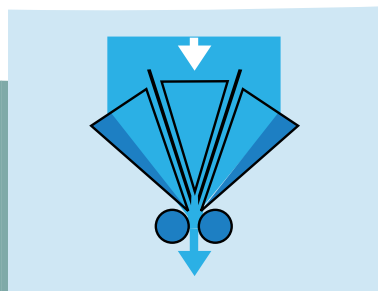
Laminating machines

These machines are used for the high performance manufacture of reliable and cost-effective compounds of different materials such as Nonwoven, film and tissue respectively PP-Nonwoven on the highest quality level.

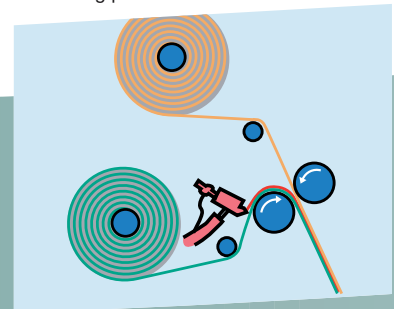
Lateral folding plates



Length folding device



Laminating process





Manufacturing machines for Mayo Stand Covers

These machines are used for the fully automatic manufacture of Mayo Stand Covers. Like all GFM machines this equipment will impress you with its sturdy design and high production capability.

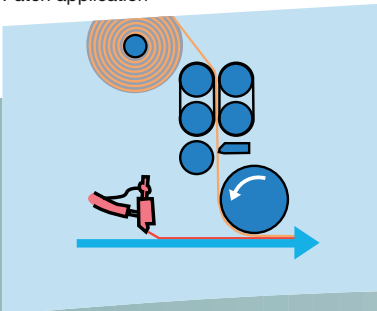
Set packaging machines

Availability of a wide range of high performance filling and wrapping machines for medical sets, kits and packs.

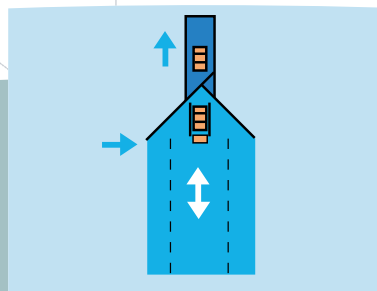
Manufacturing plants for surgical gowns

At choice semi or fully automatic production of surgical gowns. As all GFM machines they also convince by their state-of-the-art construction, solid execution and high capacity.

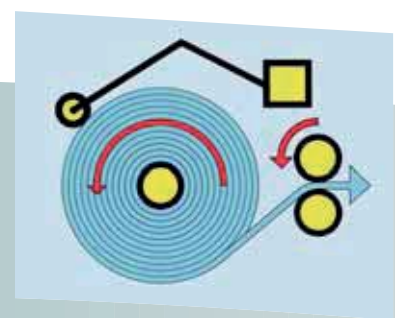
Patch application



Set infeed



Unwind



■ HYGIENIC SOLUTIONS

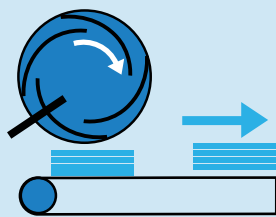
Manufacturing and Packaging Solutions for Disposable Hygienic Products

Neat and Clean Machinery for Sensitive Articles

Manufacturing plants for warming blankets

At choice semi or fully automatic production of warming blankets. As all GFM machines they also convince by their state-of-the-art construction, solid execution and high capacity.

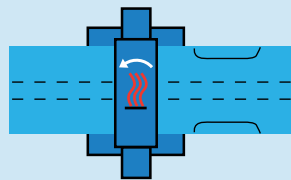
Fan wheel with delivery belt



Manufacturing machines for examination gowns

Film examination gowns are fully automatically manufactured, rewound and – upon request – automatically transferred into a cartoning machine

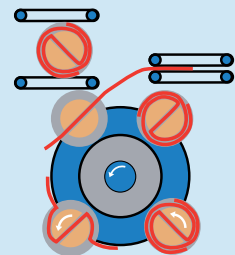
Rotary welding device



Manufacturing machines for head and shoe covers

For the fully automatic manufacture of head and shoe covers. High performance, operator friendly machines optionally equipped with an integrated cartoning equipment.

Winding wheel





Manufacturing machines for toilet seat covers

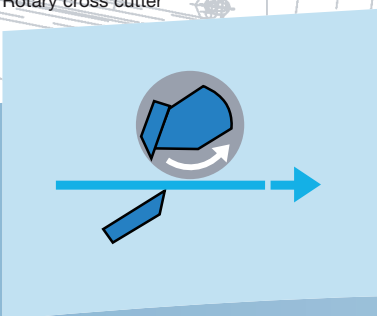
These GFM machines can be equipped with either a bulk stacker or a single-wrap system.

Manufacturing machines for headrest covers

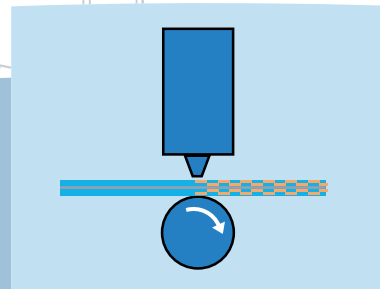
Custom-built machines for the manufacture of high quality headrest covers optionally equipped with a printing unit.



Rotary cross cutter



Ultrasonic welding device



■ CATERING SOLUTIONS

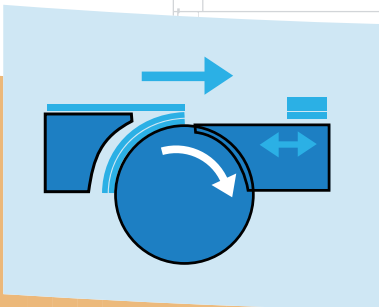
Manufacturing and Packaging Solutions for Disposable Catering Products

Mechanical Engineering – Tastefully served à la Carte

Manufacturing machines for table sets

Customized machines for high capacity production of table sets optionally equipped with different embossing, printing or folding devices.

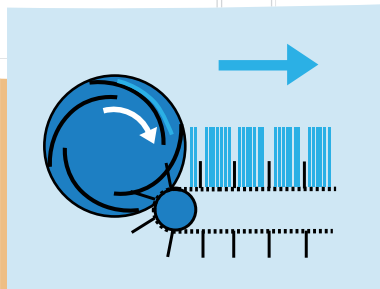
Collating cylinder



Manufacturing machines for beer collars and coasters

High capacity machines for the production of beer collars and coasters with a wide range of sizes and shapes, optionally equipped with a multi-color printing station and a cartoning system.

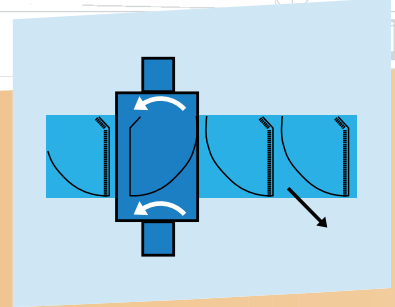
Fan wheel with delivery table



Manufacturing machines for coffee filters

Being a successful manufacturer with more than 35 years experience in the design and construction of coffee filter manufacturing machines, GFM currently offers single and dual lane machines of different capacities. The dual lane machines are optionally available with two versions of the paper saving system developed by GFM.

Material web with cutting roller



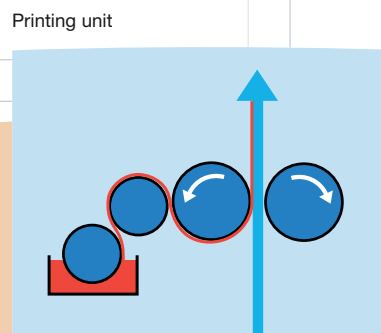
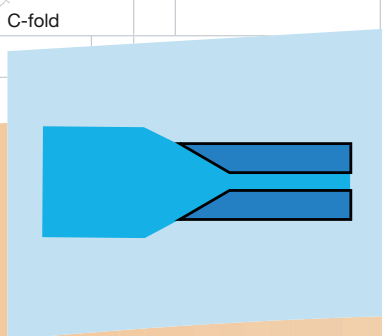


Manufacturing systems for chef hats

For the production of high quality disposable chef hats. The high performance machines can be completed with an integrated printer.

Folding systems for tablecloths

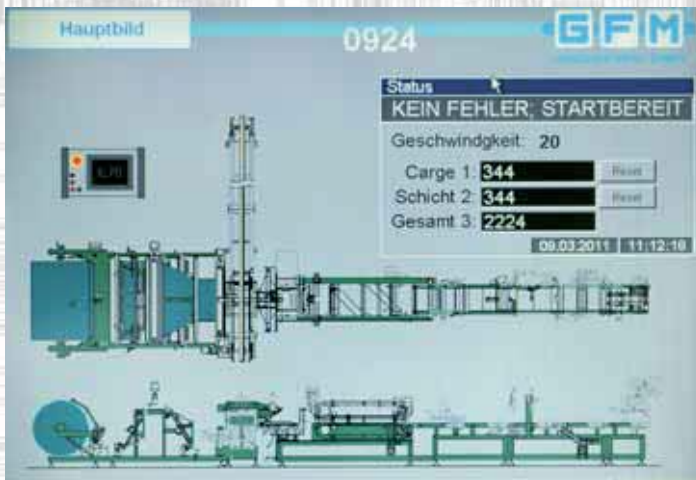
Tailor-made systems, optionally available with an automatic transfer to a packaging machine and various embossing, printing or folding stations.



■ SPECIAL SOLUTIONS

Special Tasks require Special Solutions

Individuality reads as Economy of the Feasible



Capability and creativity of the whole GFM team are the fundamentals of many custom-made and trailblazing solutions enabling our clients to manufacture their products most efficiently and to offer them at market-oriented conditions.

Shouldn't you have found an interesting solution to your specific challenge on the preceding pages or should you wonder how far an existing configuration can be adapted to your needs, please let us know.

With its decades of experience, GFM is always ready and in the position to tackle your production problem, e.g. as part of a feasibility study, and to provide you with a realistic both technically and economically convincing solution.

Additional GFM-specific advantages are: Demand compatible performance in combination with operator friendliness and high longevity. Increased installations of monitoring systems and process visualization comply with the demand for short change over times and the quest for "zero fault production".



■ WORLDWIDE SOLUTIONS FOR BETTER PRODUCTS



References

- Arrow International ■ Arizant Healthcare ■ Bastos Viegas ■ Betatex ■ Cardiva Integral Solutions ■ Codi International
- Filteretta ■ Georgia Pacific ■ Paul Hartmann ■ ITS Foil & Film Rewinding ■ Johnson & Johnson ■ Kimberly Clark
- Mölnlycke Health Care ■ 3M ■ Sengewald Klinikprodukte

Worldwide Locations of GFM Installations

- Australia ■ Austria ■ Belgium ■ Finland ■ France ■ Germany ■ Italy ■ Japan ■ Netherlands ■ Portugal ■ Spain
- Sweden ■ Switzerland ■ U.K. ■ USA





Administration / design office

GFM Maschinenbau GmbH
Karlstraße 1
45739 Oer-Erkenschwick
Germany
Phone: +49 (0) 23 68 / 91 77 - 0
Fax: +49 (0) 23 68 / 91 77 - 10



Factory

GFM Maschinenbau GmbH
Lohausstraße 22
45721 Haltern am See
Germany



www.gfm-maschinenbau.de
service@gfm-maschinenbau.de